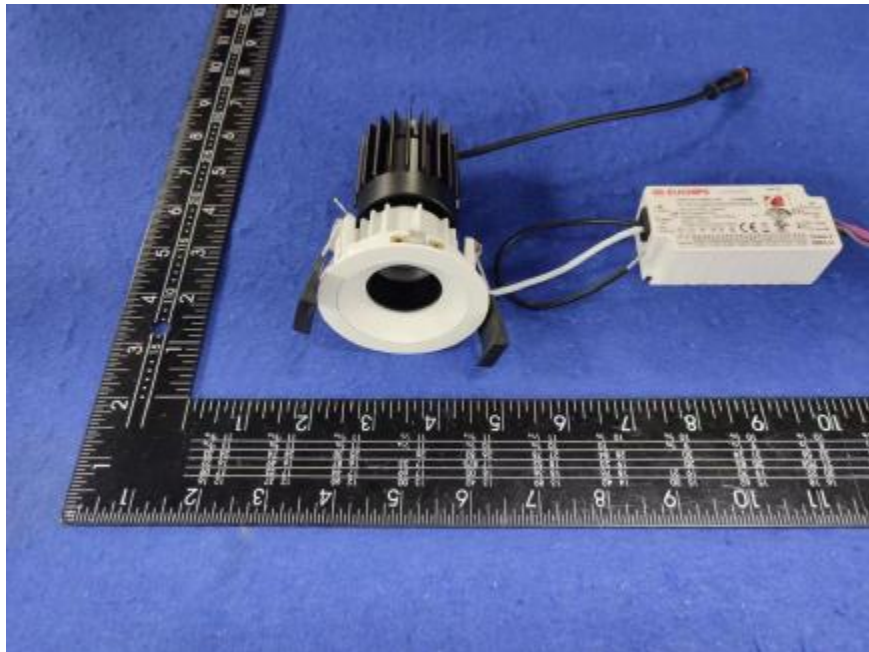


Luminaire Photograph



Light Output Ratio:	58.0%	
Luminaire Power:	12.12 W	
SHR Nominal:	0.00	Calculated using the TM5
SHR Maximum:	0.30	fine grid method.

C Range: 0 - 360DEG
C Interval: 30.0DEG
Test Speed: HIGH
Temperature: 25.3 °C
Operators: zoe
Test Date: 2023-12-7

Range: 0 - 180DEG
Interval: 1.0DEG
Test System: EVERFINE GO-SPEX500_V1 SYSTEM V2.00.461
Humidity: 65.0%
Test Distance: 3.160m [K=1.0000]
Remarks: LAMP: CMA1306-0000-000N0U0A30G Ra:90
LENS: PM-1084A 24R
DRIVER: PUP10A-1WMC-350 260mA
30minutes warm-up

LUMINOUS INTENSITY DISTRIBUTION DIAGRAM

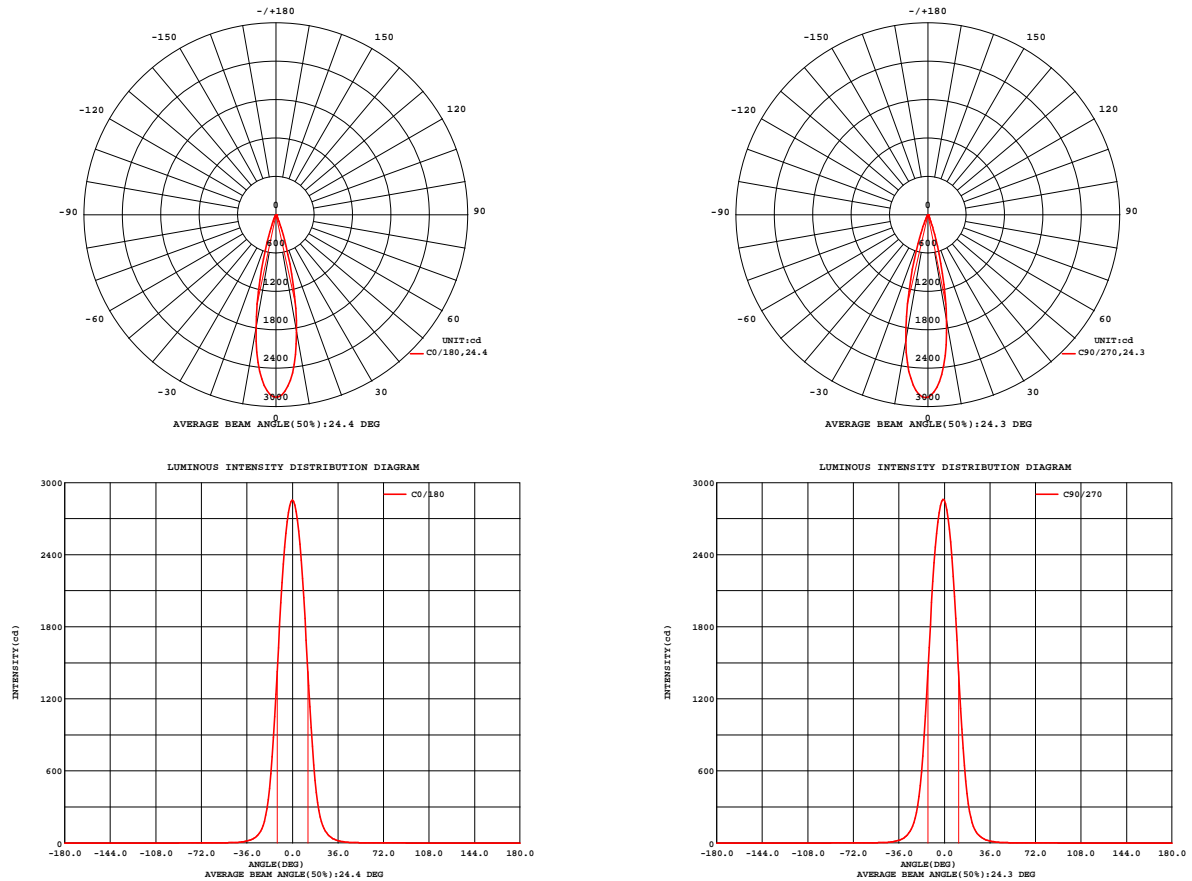


Fig. C0/C180

Fig. C90/C270

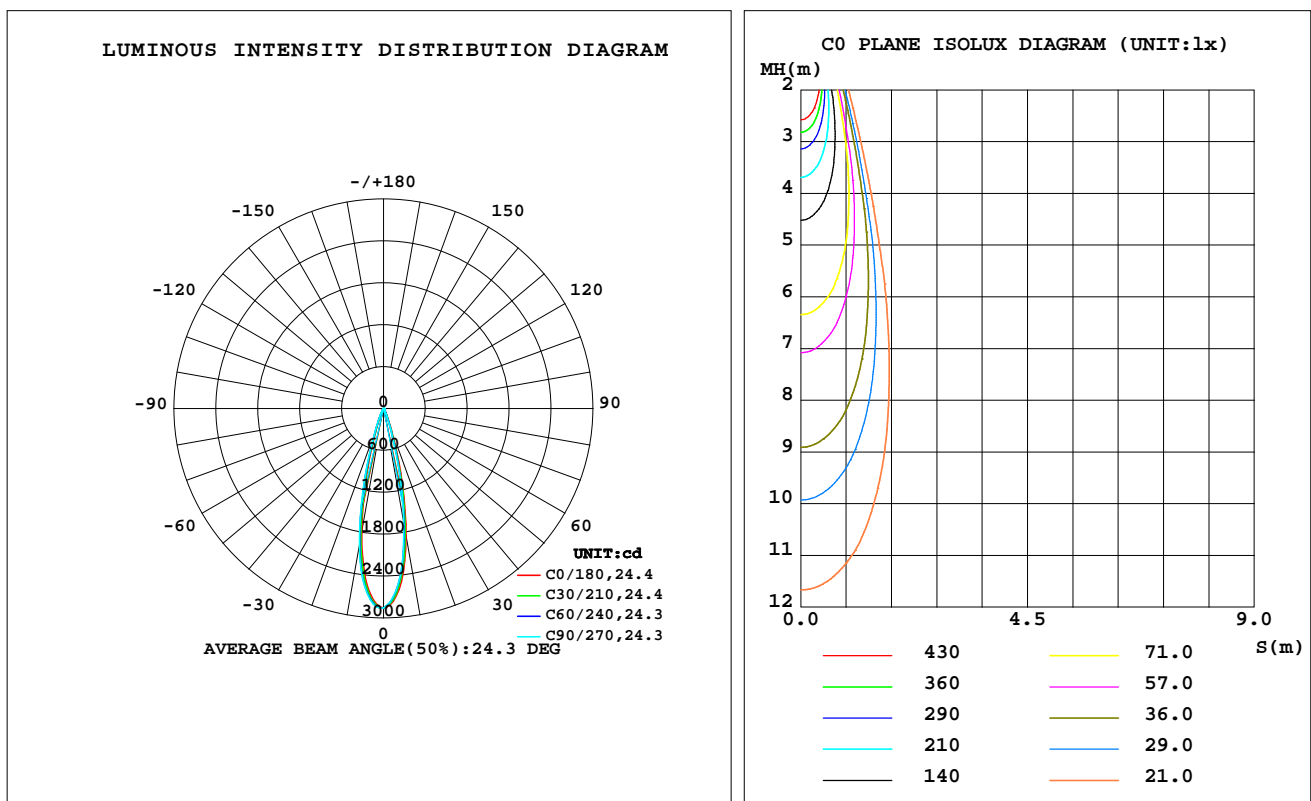
C Range: 0 - 360DEG
C Interval: 30.0DEG
Test Speed: HIGH
Temperature: 25.3 °C
Operators: zoe
Test Date: 2023-12-7

Range: 0 - 180DEG
Interval: 1.0DEG
Test System: EVERFINE GO-SPEX500_V1 SYSTEM V2.00.461
Humidity: 65.0%
Test Distance: 3.160m [K=1.0000]
Remarks: LAMP: CMA1306-0000-000N0U0A30G Ra: 90
LENS: PM-1084A 24R
DRIVER: PUP10A-1WMC-350 260mA
30minutes warm-up

LUMINAIRE PHOTOMETRIC TEST REPORT

Test:U:120.28V I:0.1016A P:12.121W PF:0.9903 Freq:59.98Hz Lamp Flux:959.178x1 lm		
NAME: 2318.116-LEA-13	TYPE:	WEIGHT:
SPEC.: 3000K	DIM.:	SERIAL No.: 2312071430
MFR.: RISE	SUR.: 0.00180864m2	Shielding Angle:

DATA OF LAMP		PHOTOMETRIC DATA Eff: 45.91 lm/W			
MODEL	CREE	I _{max} (cd)	2860	S/MH(C0/180)	0.39
NOMINAL POWER(W)	12	LOR(%)	58.0	S/MH(C90/270)	0.42
RATED VOLTAGE(V)	120	TOTAL FLUX(lm)	556.41	UP,DN(C0-180)	0.0,27.2
NOMINAL FLUX(lm)	959.178	CIE CLASS	DIRECT	UP,DN(C180-360)	0.0,30.8
LAMPS INSIDE	1	up(%)	0.0	CIBSE SHR NOM	0.00
TEST VOLTAGE(V)	120	down(%)	58.0	CIBSE SHR MAX	0.30



C Range: 0 - 360DEG
C Interval: 30.0DEG
Test Speed: HIGH
Temperature:25.3℃
Operators:zoe
Test Date:2023-12-7

Range: 0 - 180DEG
Interval: 1.0DEG
Test System:EVERFINE GO-SPEX500_V1 SYSTEM V2.00.461
Humidity:65.0%
Test Distance:3.160m [K=1.0000]
Remarks: LAMP:CMA1306-0000-000N0U0A30G Ra:90
LENS:PM-1084A 24R
DRIVER:PUP10A-1WMC-350 260mA
30minutes warm-up

ZONAL FLUX DIAGRAM

ZONAL FLUX DIAGRAM:

	C0	C45	C90	C135	C180	C225	C270	C315		zone	total	%lum,lamp
10	1870	1756	1686	1707	1812	1926	2002	1981	0- 10	223.0	223.0	40.1,23.2
20	336.4	290.9	259.4	254.6	285.5	345.6	387.7	383.9	10- 20	252.9	475.9	85.5,49.6
30	51.17	45.85	41.32	38.06	40.35	50.60	58.20	55.48	20- 30	59.22	535.1	96.2,55.8
40	11.12	10.22	9.382	8.950	8.517	10.60	12.07	12.06	30- 40	14.93	550.0	98.9,57.3
50	3.243	2.975	2.862	2.987	2.776	3.124	3.324	3.483	40- 50	4.208	554.2	99.6,57.8
60	0.6285	0.6194	0.6434	0.6501	0.6490	0.6563	0.6640	0.6499	50- 60	1.733	556.0	99.9,58
70	0.1544	0.1535	0.1638	0.1571	0.1593	0.1609	0.1574	0.1499	60- 70	0.3653	556.3	100,58
80	0.0393	0.0287	0.0329	0.0264	0.0334	0.0254	0.0295	0.0236	70- 80	0.0710	556.4	100,58
90	0	0	0	0	0	0	0	0	80- 90	0.0181	556.4	100,58
100	0	0	0	0	0	0	0	0	90-100	0	556.4	100,58
110	0	0	0	0	0	0	0	0	100-110	0	556.4	100,58
120	0	0	0	0	0	0	0	0	110-120	0	556.4	100,58
130	0	0	0	0	0	0	0	0	120-130	0	556.4	100,58
140	0	0	0	0	0	0	0	0	130-140	0	556.4	100,58
150	0	0	0	0	0	0	0	0	140-150	0	556.4	100,58
160	0	0	0	0	0	0	0	0	150-160	0	556.4	100,58
170	0	0	0	0	0	0	0	0	160-170	0	556.4	100,58
180	0	0	0	0	0	0	0	0	170-180	0	556.4	100,58
DEG	LUMINOUS INTENSITY:cd									UNIT:lm		

C Range: 0 - 360DEG
C Interval: 30.0DEG
Test Speed: HIGH
Temperature:25.3℃
Operators:zoe
Test Date:2023-12-7

Range: 0 - 180DEG
Interval: 1.0DEG
Test System:EVERFINE GO-SPEX500_V1 SYSTEM V2.00.461
Humidity:65.0%
Test Distance:3.160m [K=1.0000]
Remarks: LAMP:CMA1306-0000-000N0U0A30G Ra:90
LENS:PM-1084A 24R
DRIVER:PUP10A-1WMC-350 260mA
30minutes warm-up

LUMINANCE LIMITATION CURVES

Test:U:120.28V I:0.1016A P:12.121W PF:0.9903 Freq:59.98Hz
Lamp Flux:959.178x1 lm

NAME: 2318.116-LEA-13

TYPE:

WEIGHT:

SPEC.: 3000K

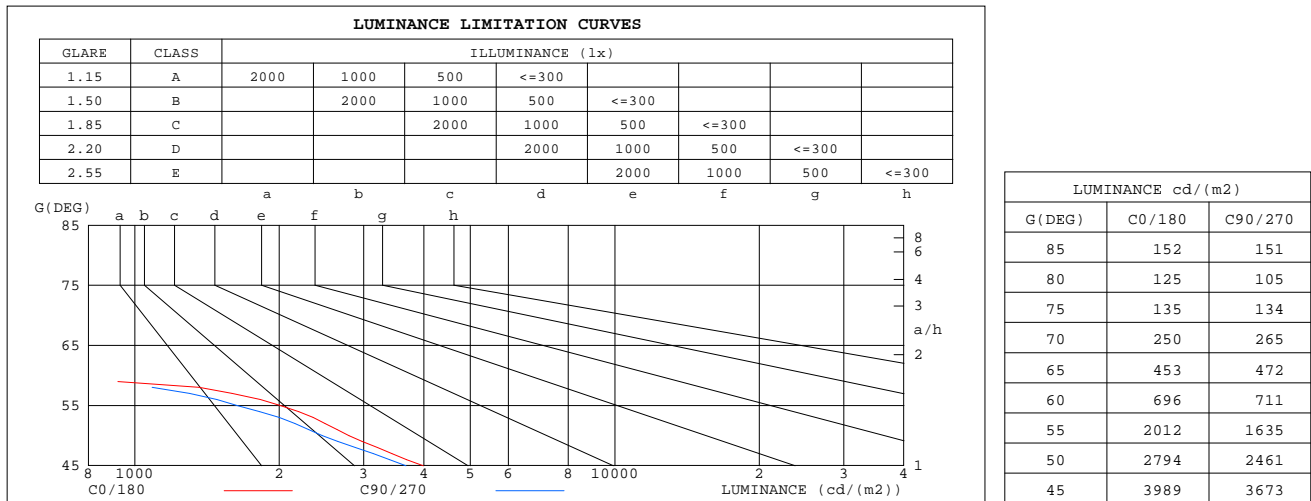
DIM.:

SERIAL No.: 2312071430

MFR.: RISE

SUR.: 0.00180864m2

Shielding Angle:



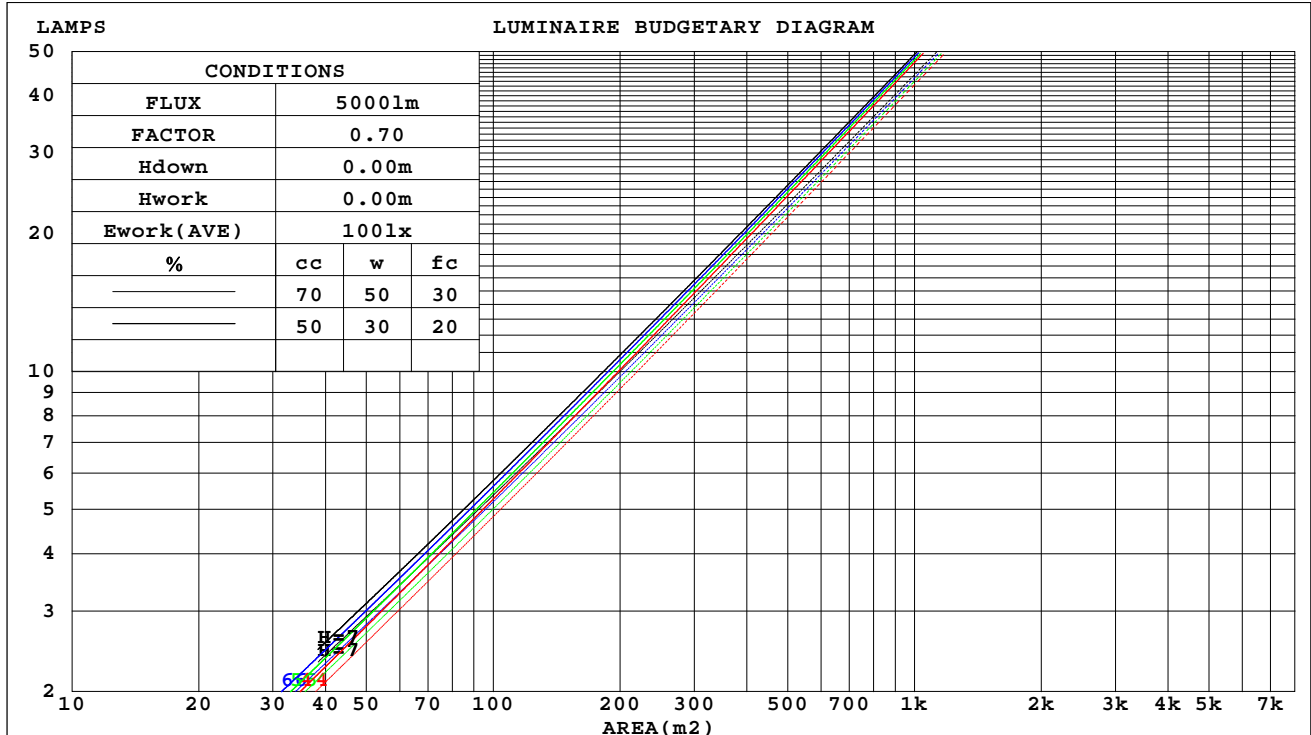
C Range: 0 - 360DEG
C Interval: 30.0DEG
Test Speed: HIGH
Temperature:25.3℃
Operators:zoe
Test Date:2023-12-7

Range: 0 - 180DEG
Interval: 1.0DEG
Test System:EVERFINE GO-SPEX500_V1 SYSTEM V2.00.461
Humidity:65.0%
Test Distance:3.160m [K=1.0000]
Remarks: LAMP:CMA1306-0000-000N0U0A30G Ra:90
LENS:PM-1084A 24R
DRIVER:PUP10A-1WMC-350 260mA
30minutes warm-up

CU AND LUMINAIRE BUDGETARY ESTIMATE DIAGRAM

Test:U:120.28V I:0.1016A P:12.121W PF:0.9903 Freq:59.98Hz Lamp Flux:959.178x1 lm		
NAME: 2318.116-LEA-13	TYPE:	WEIGHT:
SPEC.: 3000K	DIM.:	SERIAL No.: 2312071430
MFR.: RISE	SUR.: 0.00180864m2	Shielding Angle:

cc	80%			70%			50%			30%			10%			0	
w	50%	30%	10%	50%	30%	10%	50%	30%	10%	50%	30%	10%	50%	30%	10%	0	
fc	20%			20%			20%			20%			20%			0	
RCR	RCR:Room Cavity Ratio						Coefficients of Utilization(CU)										
0.0	.69	.69	.69	.67	.67	.67	.64	.64	.64	.62	.62	.62	.59	.59	.59	.58	
1.0	.66	.65	.64	.64	.63	.63	.62	.61	.61	.60	.59	.59	.58	.58	.57	.56	
2.0	.63	.61	.60	.62	.60	.59	.60	.59	.58	.58	.57	.57	.57	.56	.55	.55	
3.0	.60	.58	.57	.60	.58	.56	.58	.57	.55	.57	.56	.55	.56	.55	.54	.53	
4.0	.58	.56	.54	.58	.56	.54	.56	.55	.53	.55	.54	.53	.54	.53	.52	.52	
5.0	.56	.54	.52	.56	.54	.52	.55	.53	.52	.54	.52	.51	.53	.52	.51	.50	
6.0	.54	.52	.51	.54	.52	.50	.53	.51	.50	.53	.51	.50	.52	.51	.49	.49	
7.0	.53	.51	.49	.53	.50	.49	.52	.50	.49	.51	.50	.48	.51	.49	.48	.48	
8.0	.51	.49	.48	.51	.49	.48	.51	.49	.47	.50	.48	.47	.50	.48	.47	.46	
9.0	.50	.48	.46	.50	.48	.46	.49	.47	.46	.49	.47	.46	.49	.47	.46	.45	
10.0	.49	.47	.45	.49	.47	.45	.48	.46	.45	.48	.46	.45	.48	.46	.45	.44	



C Range: 0 - 360DEG
C Interval: 30.0DEG
Test Speed: HIGH
Temperature:25.3℃
Operators:zoe
Test Date:2023-12-7

Range: 0 - 180DEG
Interval: 1.0DEG
Test System:EVERFINE GO-SPEX500_V1 SYSTEM V2.00.461
Humidity:65.0%
Test Distance:3.160m [K=1.0000]
Remarks: LAMP:CMA1306-0000-000N0U0A30G Ra:90
LENS:PM-1084A 24R
DRIVER:PUP10A-1WMC-350 260mA
30minutes warm-up

WEC AND CCEC

Test:U:120.28V I:0.1016A P:12.121W PF:0.9903 Freq:59.98Hz Lamp Flux:959.178x1 lm		
NAME: 2318.116-LEA-13	TYPE:	WEIGHT:
SPEC.: 3000K	DIM.:	SERIAL No.: 2312071430
MFR.: RISE	SUR.: 0.00180864m2	Shielding Angle:

cc	80%			70%			50%			30%			10%			0	
w	50%	30%	10%	50%	30%	10%	50%	30%	10%	50%	30%	10%	50%	30%	10%	0	
fc	20%			20%			20%			20%			20%			0	
RCR	RCR:Room Cavity Ratio						Wall Exitance Coefficients(WEC)										
0.0																	
1.0	.076	.043	.014	.072	.041	.013	.065	.037	.012	.059	.034	.011	.053	.030	.010		
2.0	.070	.039	.012	.067	.037	.011	.061	.034	.011	.056	.031	.010	.051	.029	.009		
3.0	.065	.035	.010	.063	.034	.010	.058	.031	.010	.053	.029	.009	.049	.027	.008		
4.0	.061	.032	.009	.059	.031	.009	.055	.029	.009	.051	.027	.008	.047	.026	.008		
5.0	.057	.029	.008	.055	.028	.008	.052	.027	.008	.049	.026	.008	.046	.024	.007		
6.0	.054	.027	.008	.053	.027	.008	.050	.025	.007	.047	.024	.007	.044	.023	.007		
7.0	.051	.025	.007	.050	.025	.007	.047	.024	.007	.045	.023	.007	.043	.022	.007		
8.0	.049	.024	.007	.048	.023	.007	.045	.023	.006	.043	.022	.006	.041	.021	.006		
9.0	.047	.023	.006	.046	.022	.006	.044	.022	.006	.042	.021	.006	.040	.020	.006		
10.0	.045	.021	.006	.044	.021	.006	.042	.021	.006	.040	.020	.006	.039	.019	.006		

cc	80%			70%			50%			30%			10%			0
w	50%	30%	10%	50%	30%	10%	50%	30%	10%	50%	30%	10%	50%	30%	10%	0
fc	20%			20%			20%			20%			20%			0
RCR	RCR:Room Cavity Ratio			Ceiling Cavity Exitance Coefficients(CCEC)												
0.0	.110	.110	.110	.094	.094	.094	.064	.064	.064	.037	.037	.037	.012	.012	.012	
1.0	.097	.091	.086	.083	.079	.074	.057	.054	.051	.033	.031	.030	.011	.010	.010	
2.0	.087	.077	.069	.074	.066	.060	.051	.046	.042	.029	.027	.024	.009	.009	.008	
3.0	.078	.066	.056	.067	.057	.049	.046	.039	.034	.026	.023	.020	.008	.007	.007	
4.0	.070	.057	.046	.060	.049	.040	.042	.034	.028	.024	.020	.017	.008	.007	.006	
5.0	.064	.050	.039	.055	.043	.034	.038	.030	.024	.022	.018	.014	.007	.006	.005	
6.0	.059	.044	.033	.051	.038	.029	.035	.026	.020	.020	.016	.012	.007	.005	.004	
7.0	.054	.039	.028	.047	.034	.024	.032	.024	.017	.019	.014	.010	.006	.005	.003	
8.0	.051	.035	.024	.043	.030	.021	.030	.021	.015	.018	.013	.009	.006	.004	.003	
9.0	.047	.032	.021	.041	.027	.018	.028	.019	.013	.016	.011	.008	.005	.004	.003	
10.0	.044	.029	.018	.038	.025	.016	.026	.018	.011	.015	.010	.007	.005	.003	.002	

C Range: 0 - 360DEG
C Interval: 30.0DEG
Test Speed: HIGH
Temperature:25.3℃
Operators:zoe
Test Date:2023-12-7

Range: 0 - 180DEG
Interval: 1.0DEG
Test System:EVERFINE GO-SPEX500_V1 SYSTEM V2.00.461
Humidity:65.0%
Test Distance:3.160m [K=1.0000]
Remarks: LAMP:CMA1306-0000-000N0U0A30G Ra:90
LENS:PM-1084A 24R
DRIVER:PUP10A-1WMC-350 260mA
30minutes warm-up

UGR(Unified Glare Rating) Table

Test:U:120.28V I:0.1016A P:12.121W PF:0.9903 Freq:59.98Hz Lamp Flux:959.178x1 lm										
NAME: 2318.116-LEA-13					TYPE:			WEIGHT:		
SPEC.: 3000K					DIM.:			SERIAL No.: 2312071430		
MFR.: RISE					SUR.: 0.00180864m2			Shielding Angle:		
ceiling/cavity	0.7	0.7	0.5	0.5	0.3	0.7	0.7	0.5	0.5	0.3
walls	0.5	0.3	0.5	0.3	0.3	0.5	0.3	0.5	0.3	0.3
working plane	0.2	0.2	0.2	0.2	0.2	0.2	0.2	0.2	0.2	0.2
Room dimensions	Viewed crosswise					Viewed endwise				
x = 2H y = 2H	6.8	7.4	7.0	7.6	7.7	6.0	6.6	6.2	6.8	6.9
3H	6.7	7.3	6.9	7.4	7.6	5.9	6.5	6.1	6.7	6.8
4H	6.6	7.2	6.9	7.4	7.6	5.8	6.4	6.1	6.6	6.8
6H	6.5	7.0	6.8	7.3	7.5	5.7	6.3	6.0	6.5	6.7
8H	6.5	7.0	6.8	7.2	7.5	5.7	6.2	6.0	6.4	6.7
12H	6.4	6.9	6.7	7.2	7.4	5.7	6.1	6.0	6.4	6.7
4H 2H	6.6	7.2	6.9	7.4	7.6	5.9	6.4	6.1	6.6	6.8
3H	6.5	7.0	6.8	7.2	7.5	5.7	6.2	6.0	6.5	6.7
4H	6.4	6.8	6.7	7.1	7.4	5.6	6.1	6.0	6.4	6.7
6H	6.3	6.7	6.7	7.0	7.3	5.5	5.9	5.9	6.2	6.6
8H	6.2	6.6	6.6	6.9	7.3	5.5	5.8	5.9	6.2	6.5
12H	6.2	6.5	6.6	6.9	7.3	5.4	5.8	5.8	6.1	6.5
8H 4H	6.2	6.6	6.6	6.9	7.3	5.5	5.8	5.9	6.2	6.5
6H	6.1	6.4	6.5	6.8	7.2	5.4	5.7	5.8	6.1	6.5
8H	6.1	6.3	6.5	6.7	7.2	5.3	5.6	5.7	6.0	6.4
12H	6.0	6.2	6.5	6.7	7.1	5.2	5.5	5.7	5.9	6.4
12H 4H	6.2	6.5	6.6	6.9	7.3	5.4	5.7	5.8	6.1	6.5
6H	6.1	6.3	6.5	6.7	7.2	5.3	5.6	5.7	6.0	6.4
8H	6.0	6.2	6.5	6.7	7.1	5.2	5.5	5.7	5.9	6.4
Variations with the observer position at spacings(CIE Pub.117):										
S = 1.0H	+ 3.3 / - 6.5					+ 3.0 / - 6.7				
1.5H	+ 5.0 / - 3.9					+ 4.5 / - 4.0				
2.0H	+ 4.1 / - 7.4					+ 4.3 / - 6.8				

CIE Pub.117, 959.2 lm Total Lamp Luminous Flux Correct (8log(F/F0) = -0.1)
Area: 0.00180864 m2

C Range: 0 - 360DEG
C Interval: 30.0DEG
Test Speed: HIGH
Temperature:25.3℃
Operators:zoe
Test Date:2023-12-7

Range: 0 - 180DEG
Interval: 1.0DEG
Test System:EVERFINE GO-SPEX500_V1 SYSTEM V2.00.461
Humidity:65.0%
Test Distance:3.160m [K=1.0000]
Remarks: LAMP:CMA1306-0000-000N0U0A30G Ra:90
LENS:PM-1084A 24R
DRIVER:PUP10A-1WMC-350 260mA
30minutes warm-up

UTILIZATION FACTORS TABLE

Test:U:120.28V I:0.1016A P:12.121W PF:0.9903 Freq:59.98Hz Lamp Flux:959.178x1 lm		
NAME: 2318.116-LEA-13	TYPE:	WEIGHT:
SPEC.: 3000K	DIM.:	SERIAL No.: 2312071430
MFR.: RISE	SUR.: 0.00180864m2	Shielding Angle:

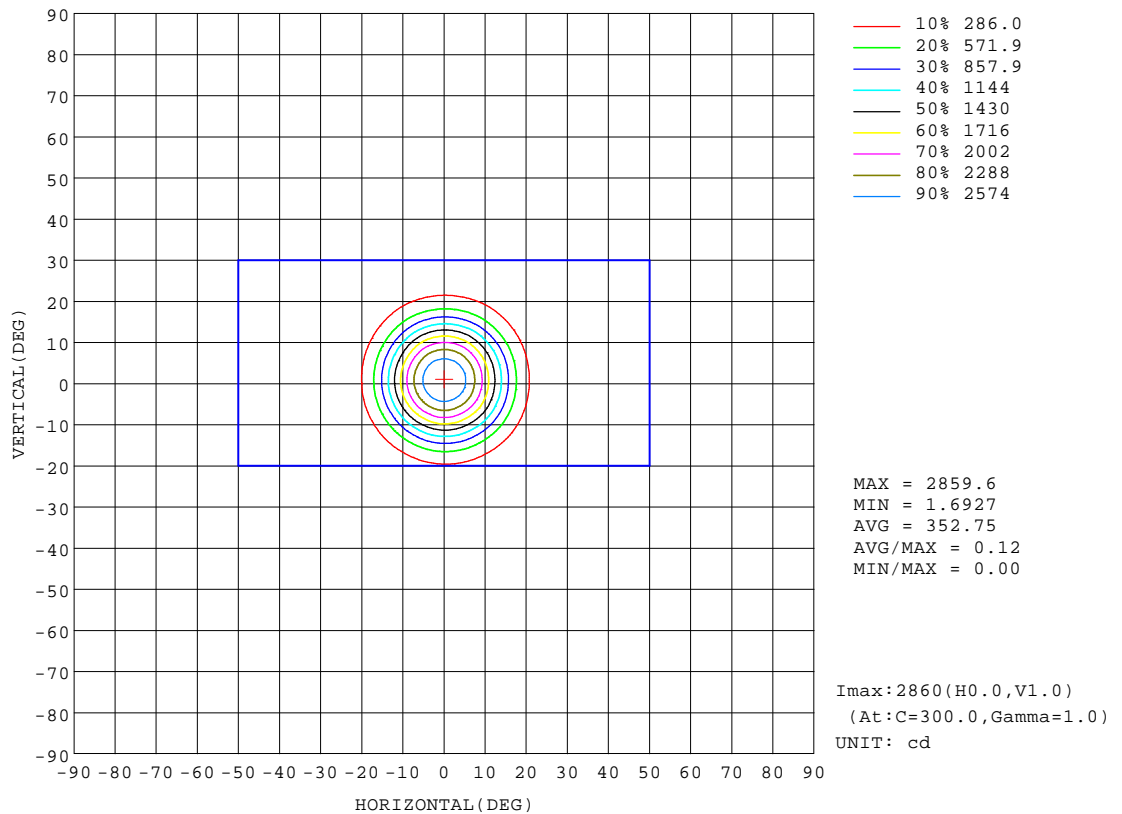
REFLECTANCE										
Ceiling	0.8	0.8	0.8	0.7	0.7	0.7	0.5	0.5	0.5	0
Walls	0.7	0.5	0.3	0.7	0.5	0.3	0.7	0.5	0.3	0
Working plane	0.2	0.2	0.2	0.2	0.2	0.2	0.2	0.2	0.2	0
ROOM INDEX	UTILIZATION FACTORS(PERCENT) $k(RI) \times RCR = 5$									
k = 0.60	53	49	47	52	49	47	52	49	47	45
0.80	57	54	52	56	54	52	56	53	51	50
1.00	59	56	54	58	56	54	58	56	54	52
1.25	61	58	57	60	58	56	59	57	56	54
1.50	62	60	58	62	60	58	60	59	57	55
2.00	64	62	60	63	61	59	61	60	59	56
2.50	65	63	61	64	62	60	62	60	59	56
3.00	65	64	62	64	63	61	62	61	60	57
4.00	66	65	64	65	64	63	63	62	61	57
5.00	67	66	65	66	65	64	64	63	62	58
ROOM INDEX	UF(total)									Direct
According to DIN EN 13032-2 2004			Suspended					SHRNOM = 1.25		

C Range: 0 - 360DEG
C Interval: 30.0DEG
Test Speed: HIGH
Temperature:25.3℃
Operators:zoe
Test Date:2023-12-7

Range: 0 - 180DEG
Interval: 1.0DEG
Test System:EVERFINE GO-SPEX500_V1 SYSTEM V2.00.461
Humidity:65.0%
Test Distance:3.160m [K=1.0000]
Remarks: LAMP:CMA1306-0000-000N0U0A30G Ra:90
LENS:PM-1084A 24R
DRIVER:PUP10A-1WMC-350 260mA
30minutes warm-up

ISOCANDELA DIAGRAM

Test:U:120.28V I:0.1016A P:12.121W PF:0.9903 Freq:59.98Hz Lamp Flux:959.178x1 lm		
NAME: 2318.116-LEA-13	TYPE:	WEIGHT:
SPEC.: 3000K	DIM.:	SERIAL No.: 2312071430
MFR.: RISE	SUR.: 0.00180864m2	Shielding Angle:

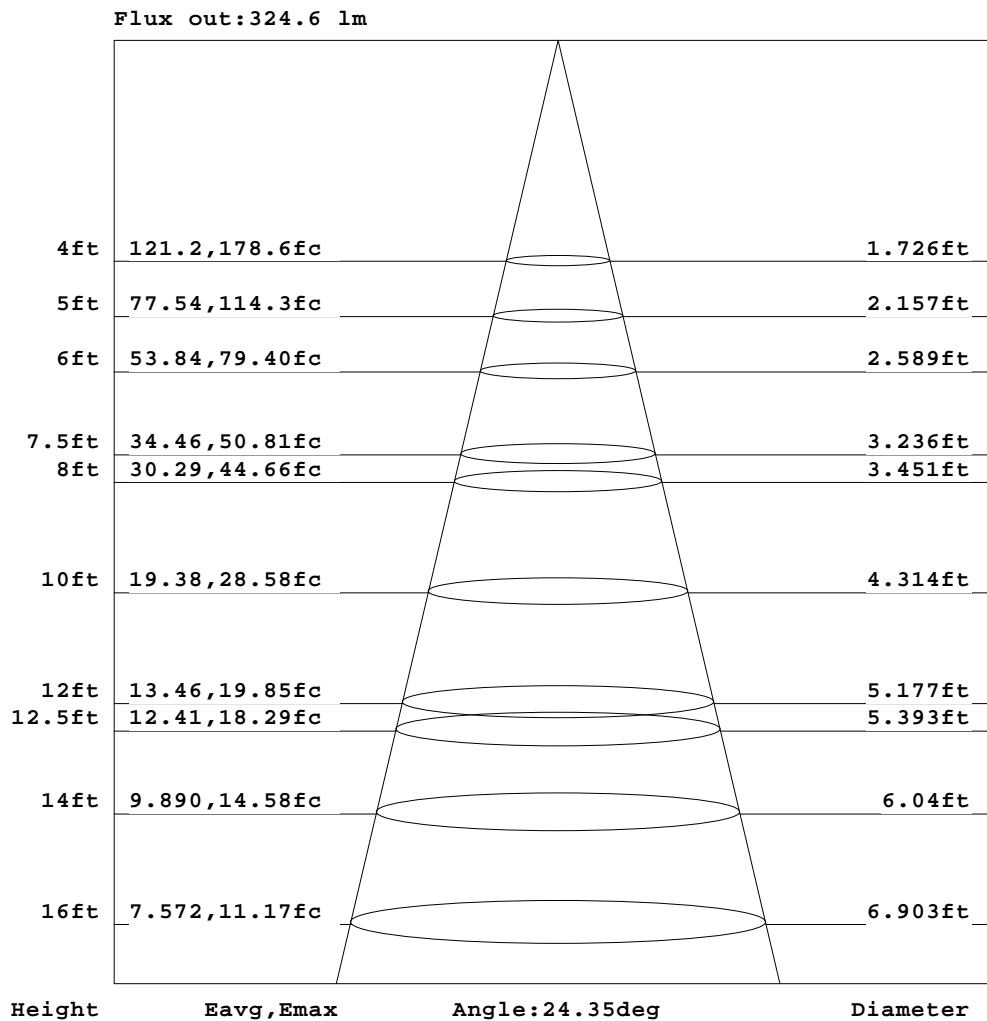


C Range: 0 - 360DEG
C Interval: 30.0DEG
Test Speed: HIGH
Temperature:25.3℃
Operators:zoe
Test Date:2023-12-7

Range: 0 - 180DEG
Interval: 1.0DEG
Test System:EVERFINE GO-SPEX500_V1 SYSTEM V2.00.461
Humidity:65.0%
Test Distance:3.160m [K=1.0000]
Remarks: LAMP:CMA1306-0000-000N0U0A30G Ra:90
LENS:PM-1084A 24R
DRIVER:PUP10A-1WMC-350 260mA
30minutes warm-up

AAI Figure

Test:U:120.28V I:0.1016A P:12.121W PF:0.9903 Freq:59.98Hz Lamp Flux:959.178x1 lm		
NAME: 2318.116-LEA-13	TYPE:	WEIGHT:
SPEC.: 3000K	DIM.:	SERIAL No.: 2312071430
MFR.: RISE	SUR.: 0.00180864m2	Shielding Angle:



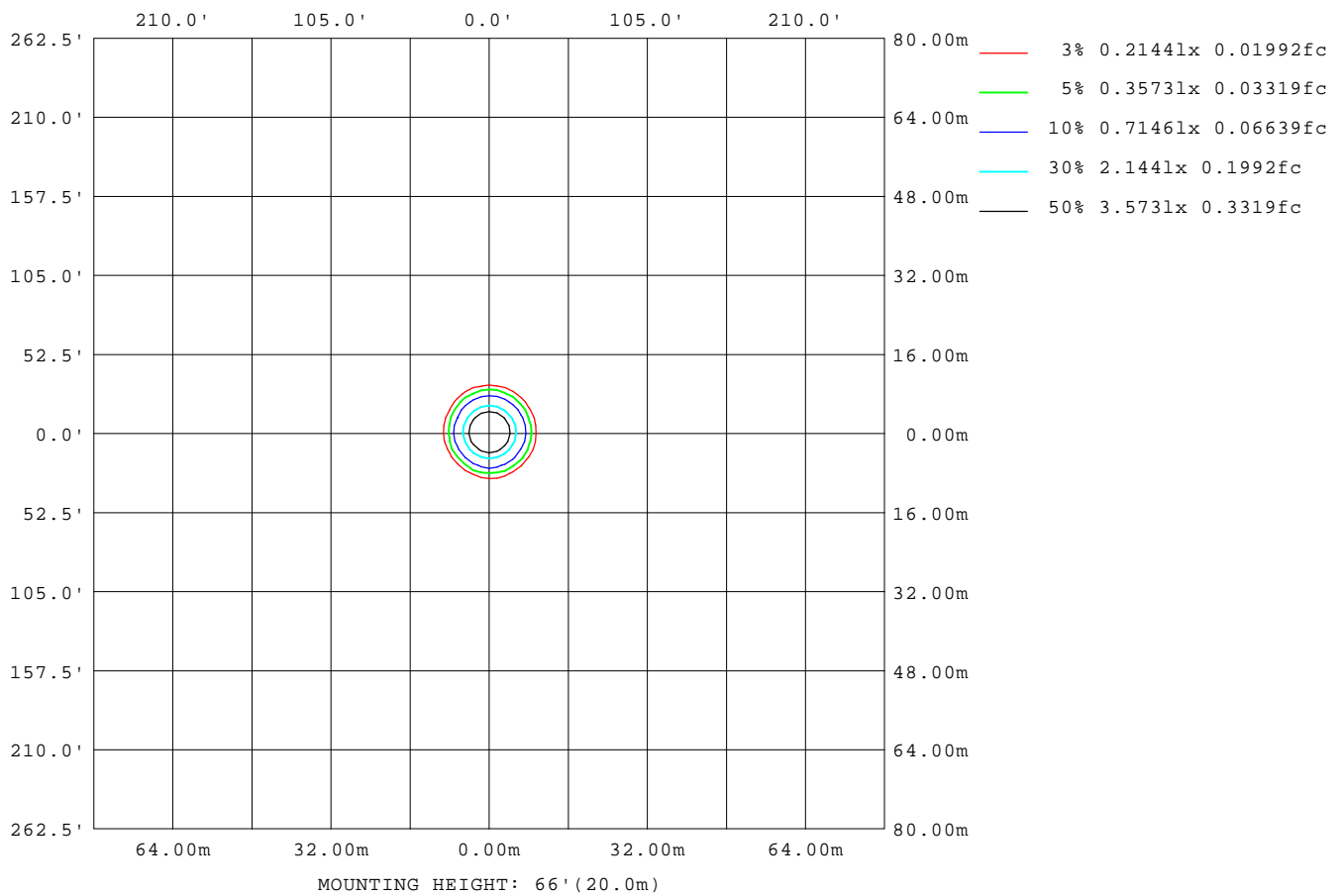
Note: The Curves indicate the illuminated area and the average illumination when the luminaire is at different distance.

C Range: 0 - 360DEG
C Interval: 30.0DEG
Test Speed: HIGH
Temperature: 25.3 °C
Operators: zoe
Test Date: 2023-12-7

Range: 0 - 180DEG
Interval: 1.0DEG
Test System: EVERFINE GO-SPEX500_V1 SYSTEM V2.00.461
Humidity: 65.0%
Test Distance: 3.160m [K=1.0000]
Remarks: LAMP: CMA1306-0000-000N0U0A30G Ra:90
LENS: PM-1084A 24R
DRIVER: PUP10A-1WMC-350 260mA
30minutes warm-up

ISOLUX DIAGRAM

Test:U:120.28V I:0.1016A P:12.121W PF:0.9903 Freq:59.98Hz Lamp Flux:959.178x1 lm		
NAME: 2318.116-LEA-13	TYPE:	WEIGHT:
SPEC.: 3000K	DIM.:	SERIAL No.: 2312071430
MFR.: RISE	SUR.: 0.00180864m2	Shielding Angle:



C Range: 0 - 360DEG
C Interval: 30.0DEG
Test Speed: HIGH
Temperature: 25.3°C
Operators: zoe
Test Date: 2023-12-7

Range: 0 - 180DEG
Interval: 1.0DEG
Test System: EVERFINE GO-SPEX500_V1 SYSTEM V2.00.461
Humidity: 65.0%
Test Distance: 3.160m [K=1.0000]
Remarks: LAMP: CMA1306-0000-000N0U0A30G Ra:90
LENS: PM-1084A 24R
DRIVER: PUP10A-1WMC-350 260mA
30minutes warm-up

LED Avg.L Report

Test:U:120.28V I:0.1016A P:12.121W PF:0.9903 Freq:59.98Hz Lamp Flux:959.178x1 lm		
NAME: 2318.116-LEA-13	TYPE:	WEIGHT:
SPEC.: 3000K	DIM.:	SERIAL No.: 2312071430
MFR.: RISE	SUR.: 0.00180864m2	Shielding Angle:

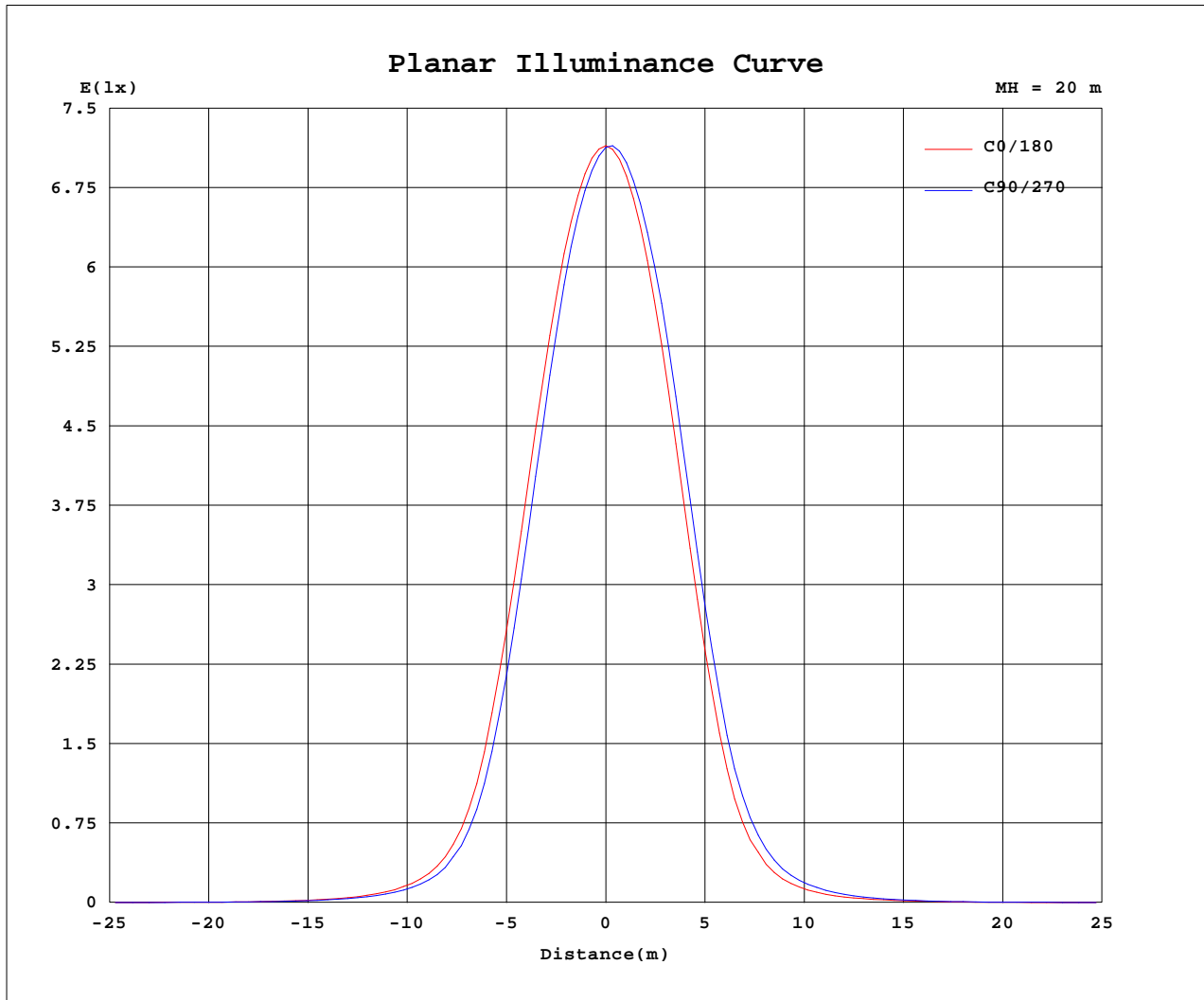
AvgL	cd/m2
L_0~180(65)av	464
L_0~180(75)av	126
L_0~180(85)av	141
L_90~270(65)av	473
L_90~270(75)av	124
L_90~270(85)av	140
L_45(65)av	466
L_45(75)av	111
L_45(85)av	79

Standard: GB/T 29293-2012

C Range: 0 - 360DEG
C Interval: 30.0DEG
Test Speed: HIGH
Temperature:25.3℃
Operators:zoe
Test Date:2023-12-7

Range: 0 - 180DEG
Interval: 1.0DEG
Test System:EVERFINE GO-SPEX500_V1 SYSTEM V2.00.461
Humidity:65.0%
Test Distance:3.160m [K=1.0000]
Remarks: LAMP:CMA1306-0000-000N0U0A30G Ra:90
LENS:PM-1084A 24R
DRIVER:PUP10A-1WMC-350 260mA
30minutes warm-up

Planar Illuminance Curve



C Range: 0 - 360DEG
 C Interval: 30.0DEG
 Test Speed: HIGH
 Temperature: 25.3 °C
 Operators: zoe
 Test Date: 2023-12-7

Range: 0 - 180DEG
 Interval: 1.0DEG
 Test System: EVERFINE GO-SPEX500_V1 SYSTEM V2.00.461
 Humidity: 65.0%
 Test Distance: 3.160m [K=1.0000]
 Remarks: LAMP: CMA1306-0000-000N0U0A30G Ra:90
 LENS: PM-1084A 24R
 DRIVER: PUP10A-1WMC-350 260mA
 30minutes warm-up

LUMINOUS DISTRIBUTION INTENSITY DATA

Test:U:120.28V I:0.1016A P:12.121W PF:0.9903 Freq:59.98Hz Lamp Flux:959.178x1 lm		
NAME: 2318.116-LEA-13	TYPE:	WEIGHT:
SPEC.: 3000K	DIM.:	SERIAL No.: 2312071430
MFR.: RISE	SUR.: 0.00180864m2	Shielding Angle:

Table--1

UNIT: cd

C(DEG) (DEG)	0	30	60	90	120	150	180	210	240	270	300	330						
0	2854	2854	2854	2854	2854	2854	2854	2854	2854	2854	2854	2854						
5	2596	2554	2513	2506	2513	2539	2578	2620	2657	2671	2670	2643						
10	1870	1798	1713	1686	1677	1738	1812	1881	1971	2002	2009	1953						
15	962	902	825	789	781	811	879	941	1027	1055	1079	1037						
20	336	308	273	259	249	261	285	321	370	388	396	372						
25	120	113	100	93.8	88.2	88.2	97.3	113	134	139	138	127						
30	51.2	48.0	43.7	41.3	38.2	37.9	40.4	46.4	54.8	58.2	57.5	53.5						
35	23.8	22.5	20.7	20.0	18.9	18.8	18.9	21.2	24.8	26.6	26.8	24.9						
40	11.1	10.6	9.86	9.38	9.13	8.77	8.52	9.64	11.6	12.1	12.3	11.8						
45	5.09	4.82	5.15	4.70	4.57	4.54	4.23	4.63	5.04	5.28	5.52	5.46						
50	3.24	3.04	2.91	2.86	2.92	3.06	2.78	3.08	3.17	3.32	3.48	3.48						
55	2.08	1.96	1.75	1.70	1.86	2.12	1.73	2.01	2.03	2.17	2.36	2.35						
60	0.63	0.61	0.63	0.64	0.65	0.65	0.65	0.65	0.66	0.66	0.65	0.65						
65	0.35	0.34	0.35	0.36	0.36	0.36	0.36	0.37	0.37	0.36	0.35	0.35						
70	0.15	0.15	0.16	0.16	0.16	0.16	0.16	0.16	0.16	0.16	0.15	0.15						
75	0.06	0.05	0.06	0.06	0.05	0.05	0.06	0.05	0.05	0.05	0.05	0.05						
80	0.04	0.03	0.03	0.03	0.03	0.02	0.03	0.03	0.02	0.03	0.02	0.03						
85	0.02	0.01	0.02	0.02	0.01	0.01	0.02	0.01	0.01	0.02	0.01	0.01						
90	0.00	0.00	0.00	0.00	0.00	0.00	0.00	0.00	0.00	0.00	0.00	0.00						
95	0.00	0.00	0.00	0.00	0.00	0.00	0.00	0.00	0.00	0.00	0.00	0.00						
100	0.00	0.00	0.00	0.00	0.00	0.00	0.00	0.00	0.00	0.00	0.00	0.00						
105	0.00	0.00	0.00	0.00	0.00	0.00	0.00	0.00	0.00	0.00	0.00	0.00						
110	0.00	0.00	0.00	0.00	0.00	0.00	0.00	0.00	0.00	0.00	0.00	0.00						
115	0.00	0.00	0.00	0.00	0.00	0.00	0.00	0.00	0.00	0.00	0.00	0.00						
120	0.00	0.00	0.00	0.00	0.00	0.00	0.00	0.00	0.00	0.00	0.00	0.00						
125	0.00	0.00	0.00	0.00	0.00	0.00	0.00	0.00	0.00	0.00	0.00	0.00						
130	0.00	0.00	0.00	0.00	0.00	0.00	0.00	0.00	0.00	0.00	0.00	0.00						
135	0.00	0.00	0.00	0.00	0.00	0.00	0.00	0.00	0.00	0.00	0.00	0.00						
140	0.00	0.00	0.00	0.00	0.00	0.00	0.00	0.00	0.00	0.00	0.00	0.00						
145	0.00	0.00	0.00	0.00	0.00	0.00	0.00	0.00	0.00	0.00	0.00	0.00						
150	0.00	0.00	0.00	0.00	0.00	0.00	0.00	0.00	0.00	0.00	0.00	0.00						
155	0.00	0.00	0.00	0.00	0.00	0.00	0.00	0.00	0.00	0.00	0.00	0.00						
160	0.00	0.00	0.00	0.00	0.00	0.00	0.00	0.00	0.00	0.00	0.00	0.00						
165	0.00	0.00	0.00	0.00	0.00	0.00	0.00	0.00	0.00	0.00	0.00	0.00						
170	0.00	0.00	0.00	0.00	0.00	0.00	0.00	0.00	0.00	0.00	0.00	0.00						
175	0.00	0.00	0.00	0.00	0.00	0.00	0.00	0.00	0.00	0.00	0.00	0.00						
180	0.00	0.00	0.00	0.00	0.00	0.00	0.00	0.00	0.00	0.00	0.00	0.00						

C Range: 0 - 360DEG
C Interval: 30.0DEG
Test Speed: HIGH
Temperature:25.3℃
Operators:zoe
Test Date:2023-12-7

Range: 0 - 180DEG
Interval: 1.0DEG
Test System:EVERFINE GO-SPEX500_V1 SYSTEM V2.00.461
Humidity:65.0%
Test Distance:3.160m [K=1.0000]
Remarks: LAMP:CMA1306-0000-000N0U0A30G Ra:90
LENS:PM-1084A 24R
DRIVER:PUP10A-1WMC-350 260mA
30minutes warm-up